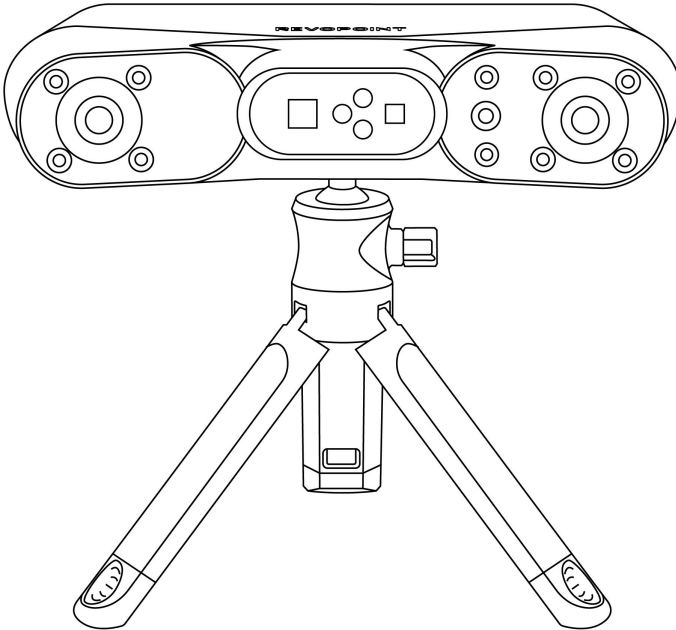


POP 4 3D Scanner

Quick Start Guide

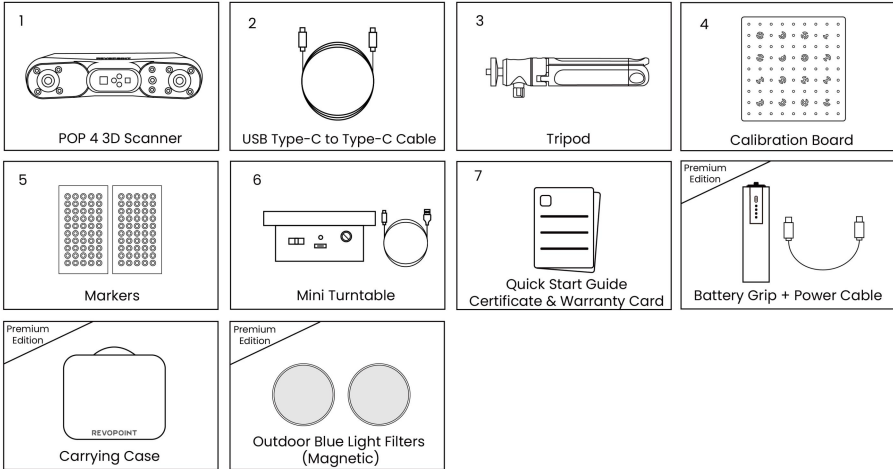
V1.3



Contents

 What's in the Box	1
 Product Profile	1
 Safety Instructions	2
 Software Download & System Requirements	3
 Using a PC to Scan	4
I. Connecting POP 4 to a PC via USB Cable	4
II. Connecting POP 4 to a PC via Wi-Fi	5
 Using a Phone to Scan	6
 Mini Turntable Setup	7
 Read Before Scanning	7
 Scanner Calibration	7
 Software Interface Overview	8
 Screen Mirroring	9
IC Warning	9
FCC Warning	9

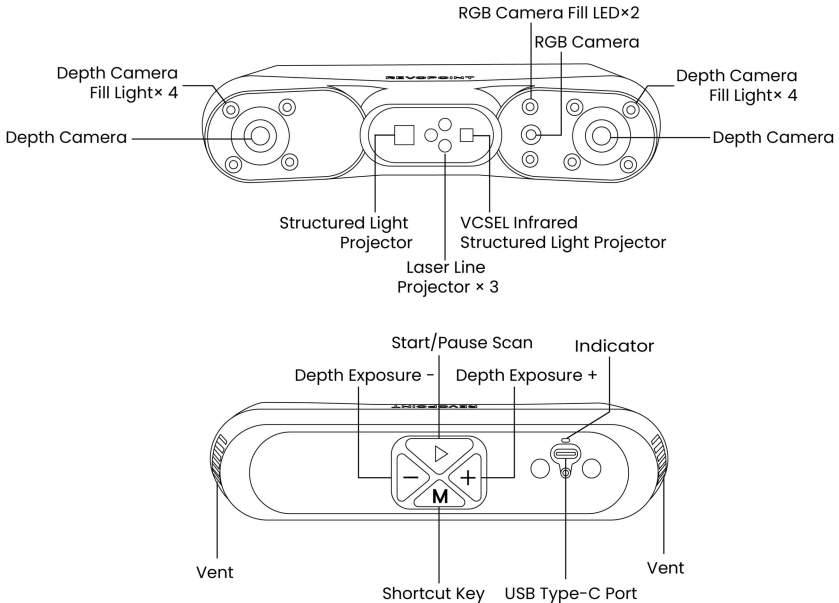
What's in the Box



Note: When scanning via a Wi-Fi connection, the Battery Grip and Battery Grip Power Cable are required (not included in the Standard Edition).

You can purchase the Mobile Kit (4th Gen) and the Outdoor Blue Light Filter as needed from Revopoint's online stores. The package contents are for reference only; please refer to the actual items received.

Product Profile



Press the M button briefly to customize its function: set Depth Camera exposure / set laser brightness / switch the laser line type / toggle full-screen mode.

Indicator Light States

Red - Flashing	Powering up
Green - Solid	Powered
Blue - Flashing	Operating normally

Safety Instructions

1. Product Laser Specifications

It is classified as a CLASS 1 LASER PRODUCT.



2. Laser Safety

Under normal conditions of use, Class 1 laser radiation is considered safe for eyes and skin. To ensure safety, please follow the safety instructions below.

- Do not look directly into the laser beam or view it through optical instruments (such as telescopes or camera lenses) under any circumstances. Do not direct the beam toward areas where such instruments are likely to be used.
- Be aware of your surroundings and avoid directing the laser toward other people's eyes during use.
- Do not look directly at the laser source at close range during operation. Do not place mirrors, glass, or other reflective objects in the beam path.

3. Maintenance and Operation Safety

- Please keep the scanner away from water and other liquids, and avoid dropping or bashing it.
- This product's operating environment temperature range is 0°C to 40°C (32°F to 104°F). Please use the product only within this range.
- Do not remove, disassemble, or modify any part of the product. Any modifications to the product may render it non-compliant with safety standards.
- Keep this product out of the reach of children.

Software Download & System Requirements

Before your first scan, please install the official software. The download links and requirements are listed in the table below. Please refer to the latest information on the official website for system requirements.

Software	Revo Scan 6 (PC)	Revo Scan 6 (Mobile)
Official Download	"Support - Download" on global.revopoint3d.com	Apple App Store or Google Play Store
Supported Scanning Modes	Full-field HD / Laser Line / VCSEL Rapid / Hybrid HD	Full-field HD / VCSEL Rapid / Hybrid HD
Software Requirements	Minimum PC Requirements: Windows: Win 10/11 (64 bit) CPU: Intel i7 13th Gen or AMD Ryzen 7 5800 RAM ≥ 16 GB GPU: NVIDIA GeForce RTX 3060 (8 GB) macOS: macOS 11.0 or better RAM: ≥16 GB Processor: M1 Pro/Max/Ultra	Mobile Requirements: Android System version: Android 9.0 or better RAM: ≥8 GB Storage : ≥128 GB iPhone: Models after iPhone X System version: iOS 14.0 or better RAM: >4 GB Storage: ≥64 GB iPad: 10th Gen iPad or later
	Recommended PC Requirements: Windows: Win 10/11 (64 bit) CPU: Intel i9 12th Gen or better RAM ≥ 32 GB GPU: NVIDIA RTX 4060 (8 GB) or better macOS: macOS 11.0 or better RAM: ≥24 GB Processor: M3 Pro/Max/Ultra or better	

Note: If you're unsure about the CPU configuration, ensure the CPU has ≥8 cores, ≥16 threads, and a base frequency ≥ 2.4 GHz. Ensure the USB port on your PC is USB 3.0 or above.

A dedicated graphics card is only required for acceleration in Laser Line Scanning modes. AMD and MAC GPUs do not currently support acceleration.

Scanner Connections

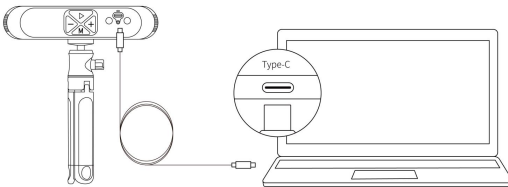
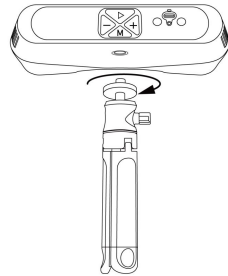
Mode \ System	PC	Phone
	Windows / macOS	Android / iOS
USB	✓	×
Wi-Fi	✓	✓

Using a PC to Scan

I. Connecting POP 4 to a PC via USB Cable

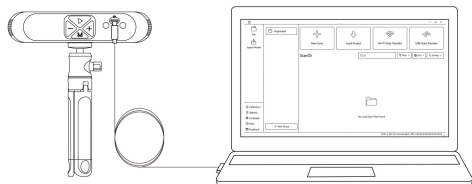
Step 1: Mount the scanner on the tripod.

Note: Adjust the tripod's height by extending each leg evenly to the locking position to avoid instability.



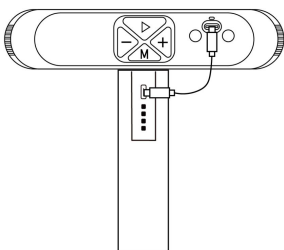
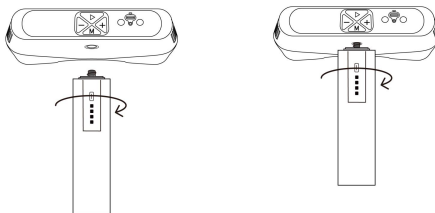
Step 2: Use the USB Type-C to Type-C Cable to connect the scanner to a PC. When the scanner's indicator turns solid green, it's powered.

Step 3: Open the Revo Scan 6 software. When the bottom-right corner of the interface indicates that the scanner is connected, you can begin scanning.



II. Connecting POP 4 to a PC via Wi-Fi

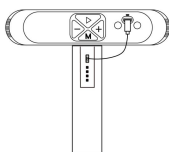
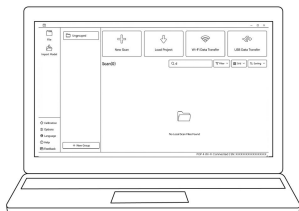
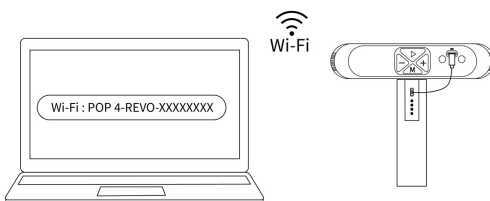
Step 1: Assemble the scanner and the Battery Grip.



Step 2: Use the Battery Grip Power Cable to connect the scanner and the Battery Grip. Wait until the Indicator turns solid green to confirm that it is powered.

Note: Do not connect the scanner directly to a PC for power, or it will default to USB mode.

Step 3: Search for a Wi-Fi network called **POP 4-REVO-XXXXXXX** in your PC's Wi-Fi settings, and connect (no password is required).

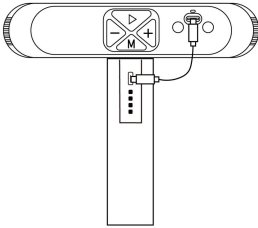
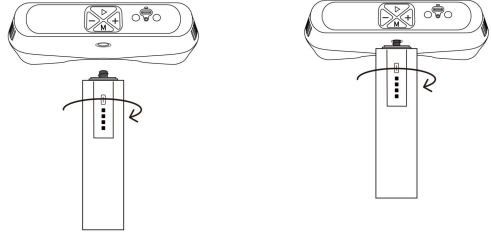


Step 4: Open the Revo Scan 6 software. When the bottom-right corner of the interface indicates that the scanner is connected, you can begin scanning.

Using a Phone to Scan

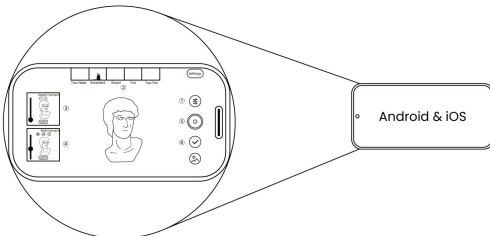
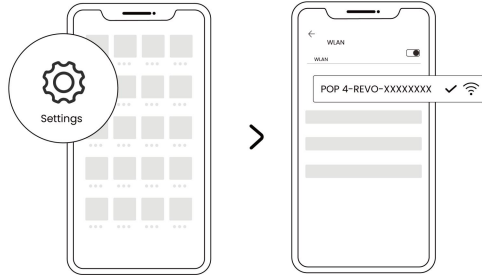
You can scan on your phone via a Wi-Fi connection. Follow the steps below:

Step 1: Assemble the scanner and the Battery Grip.



Step 2: Use the Battery Grip Power Cable to connect the scanner and the Battery Grip. Wait until the Indicator turns solid green to confirm that it is powered.

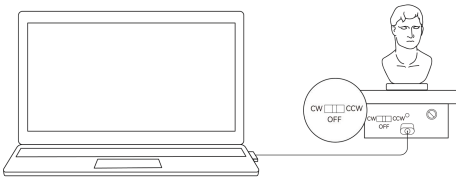
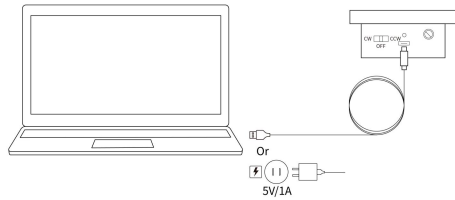
Step 3: Search for a Wi-Fi network called **POP 4-REVO-XXXXXXX** in your smartphone's Wi-Fi settings, and connect (no password is required).



Step 4: Open the Revo Scan 6 software. When the phone switches to the scan preview screen, you can start scanning.

Mini Turntable Setup

Step 1: Connect the turntable to a PC or a 5V/1A third-party power adapter via the turntable's power cable. When the indicator turns solid green, it's powered.



Step 2: Place an object on the turntable. Flick the switch to change the turntable's rotational direction, and twist the dial to set the speed.

Read Before Scanning

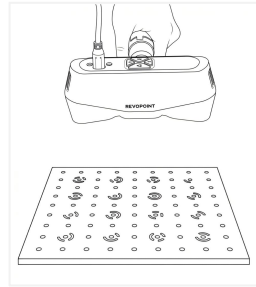
- Ensure only the object to be scanned is shown in the Depth Cameras' preview window. Ensure the object is evenly lit if performing a color scan.
- When scanning with markers, attach them irregularly on the surface, ensuring at least 5 can be captured in a single frame. For best accuracy, place markers on flat surfaces and avoid curved ones.
- Before calibrating the scanner or scanning in Laser Line Scanning mode, warm up the device for 10 minutes to ensure optimal accuracy.
- For outdoor scanning, avoid rainy or windy weather to prevent water damage or reduced data accuracy from wet surfaces.
- If you use Laser Line Scanning Mode for outdoor scanning under strong sunlight, it is recommended to purchase the Outdoor Blue Light Filters to improve the scanning results.

Scanner Calibration

Recalibrate the scanner via Revo Scan 6's home page using the Calibration program to maintain accuracy. The scanner was professionally calibrated at the factory. **Before scanning, check accuracy through the calibration program and recalibrate as instructed if needed.**

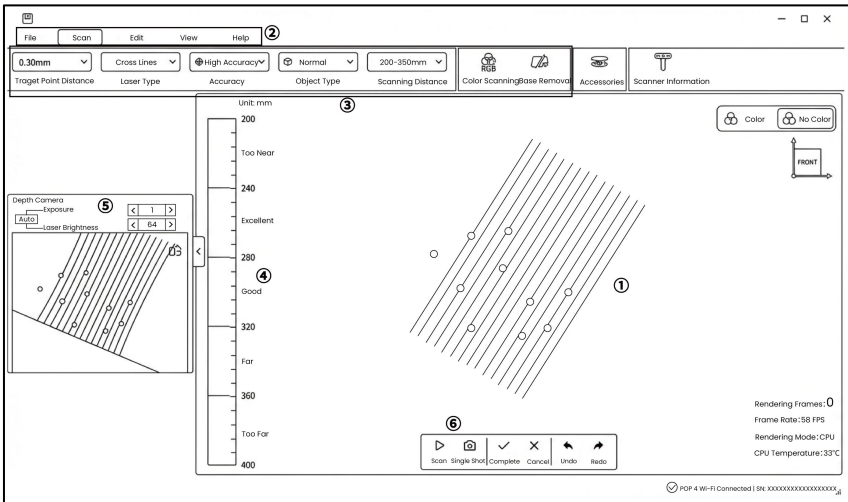
Ensure the computer is plugged in during calibration. You can calibrate the scanner as follows:

- 1 Download the latest version of Revo Scan 6 from the Support - Download section on Revopoint's website at global.revopoint3d.com and open it.
- 2 Connect the scanner to a USB 3.0 port on a PC using the provided USB Type-C to Type-C Cable.
- 3 When the software shows Scanner Connected, click "Calibration" on the bottom left of Revo Scan 6's Home page to start calibration.
- 4 Complete the accuracy check and calibration following the on-screen instructions.



Software Interface Overview

After the scanner is connected successfully, click **New Scan** to enter the scanning page:



※ Please refer to Revo Scan 6's interface.

- | | |
|-----------------------|------------------------|
| 1 Main View | 2 Menu Bar |
| 3 Scan Settings | 4 Distance Histogram |
| 5 Depth Camera Window | 6 Scan Control Buttons |

For more scanning methods and software instructions, see the online user manual on the software Help page.

Screen Mirroring

Using the Revo Mirror software, you can stream the Revo Scan 6 interface from your PC to your phone in real time for easy remote preview and control.

Revo Mirror screen mirroring steps:

- ① Visit the Revopoint official website and go to “Support - Download” menu to download and install Revo Mirror for both desktop and mobile.
- ② Mount the Battery Grip onto the scanner. Connect the Battery Grip to the scanner with the Battery Grip Power Cable.
- ③ Ensure both the computer and phone are connected to the network named “POP 4-REVO-XXXXXXX.” Open Revo Scan 6, wait for the scanner to connect and enter the scanning page, then click the mirroring button.
- ④ Tap the detected device to be mirrored in the mobile Revo Mirror app.
- ⑤ Follow the prompt on the PC to enter the PIN code to complete the initial pairing. Then, click “Enter Screen Mirror Mode” to control the scanning process.

IC Warning

This device complies with Industry Canada’s licence-exempt RSS standard(s). Operation is subject to the following two conditions:

(1) This device may not cause interference, and (2) this device must accept any interference, including interference that may cause undesired operation of the device.

This Class B digital apparatus complies with Canadian ICES-003.

IC RF Statement:

When using the product, maintain a distance of 20cm from the body to ensure compliance with RF exposure requirements.

FCC Warning

This device complies with part 15 of the FCC Rules. Operation is subject to the following two conditions:

(1) This device may not cause harmful interference, and (2) this device must accept any interference received, including interference that may cause undesired operation.

Any Changes or modifications not expressly approved by the party responsible for compliance could void the user’s authority to operate the equipment.

Note: This equipment has been tested and found to comply with the limits for a Class B digital device, pursuant to part 15 of the FCC Rules. These limits are designed to provide reasonable protection against harmful interference in a residential installation. This equipment generates uses and can radiate radio frequency energy and, if not installed and used in accordance with the instructions, may cause harmful interference to radio communications. However, there is no guarantee that interference will not occur in a particular installation. If this equipment does cause harmful interference to radio or television reception, which can be determined by turning the equipment off and on, the user is encouraged to try to correct the interference by one or more of the following measures:

-Reorient or relocate the receiving antenna.

-Increase the separation between the equipment and receiver.

-Connect the equipment into an outlet on a circuit different from that to which the receiver is connected.

-Consult the dealer or an experienced radio/TV technician for help.

This equipment complies with FCC radiation exposure limits set forth for an uncontrolled environment.

This equipment should be installed and operated with a minimum distance of 20cm between the radiator & your body.

User Manual



Tutorial Videos



Follow US



Contact US

